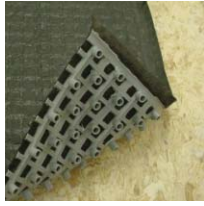


LEVELROCK™ Brand Sound Reduction Mat



SRM-25™

- Use between floors and units for excellent sound control
- Only 4.6% contact with floor surface
- Available in rolls for easy handling and installation
- 1/4" thick to minimize floor transition
- Ideal for wood-joint and concrete floor systems

Description

LEVELROCK™ Brand SRM-25™ Sound Reduction Mat is a high-performance material that increases IIC and STC ratings in wood-joint and concrete floor systems. This material is packaged in rolls and cuts easily with a utility knife for easy handling and quick installation. LEVELROCK Brand SRM-25 Sound Reduction Mat can improve IIC values by as much as 13 points, depending on the system tested; IIC values are always a function of the system design.

Physical Properties

Material: High-strength polyethylene core and polypropylene fabric
Thickness: 0.25 inches
Density: 2.4 lbs./cu. ft.
Weight: .20 lbs./sq. ft.
Burst Strength: 200 lbs.
Puncture Strength: 60 lbs.
Color: Black

Packaging

Roll Width: 36 inches
Length: 110 feet
Area: 330 sq. ft.
Roll Diameter: 21 inches
Gross Weight: 75 lbs.

Acoustical Performance¹

IIC	Additional 8-13 points
STC	Additional 4-7 points

1. Actual acoustical performance is dependent on system design and construction. Values shown represent typical improvements provided by LEVELROCK Brand SRM-25 Sound Reduction Mat.

Storage and Handling

Material shall be delivered in original packaging and stored in an enclosed shelter providing protection from damage and exposure to the elements.

Installation Guidelines

Perimeter Isolation Foam

1. Install 1/4" LEVELROCK Brand Sound Isolation Strip polyethylene foam vertically at perimeter of subfloor including doorframes and around protrusions (e.g. plumbing, electrical, etc.). LEVELROCK Brand Sound Isolation Strip isolates sound mat from the walls, creating an acoustical break to minimize lateral sound transmission. LEVELROCK Brand Sound Isolation Strip also creates space to accommodate movement of the subfloor and expansion of the finished flooring.
2. Do not adhere LEVELROCK Brand Sound Isolation Strip with nails, screws, etc., as mechanical fasteners conduct impact sound, eliminating acoustical isolation.

Drywall Staple upper edge of foam to drywall, approximately 1 staple every 6 feet. Staples must be removed when the foam is trimmed to height of finished floor after LEVELROCK Brand Floor Underlayment is installed.

Concrete walls and protrusions in floor Adhere foam with flexible acoustical sealant, applying sealant to bottom 1" on back of mat. If conditions allow, foam may instead be held in place with LEVELROCK Brand Seam Tape.

**LEVELROCK Brand
SRM-25 Sound
Reduction Mat**

1. Cut each section of mat to full length of room so the number of seams is minimized.
2. Lay mat directly over subfloor (or waterproofing membrane, if applicable) with flat, fabric side facing up. If a mopped-on waterproof membrane has been applied to subfloor, place a layer of 15 lb. felt over membrane before installation of sound reduction mat.
3. Butt edges of adjoining lengths of mat together and tape joints with LEVELROCK Brand Seam Tape or a high-quality duct tape, such as NASHUA® 357, SHURTAPE® PC721 or equivalent. Do not use economy grades of duct tape, as the adhesive qualities are not sufficient to hold a bond when the LEVELROCK Brand Floor Underlayment is applied.
4. LEVELROCK Brand SRM-25 Sound Reduction Mat is free-floating. Do not attach to subfloor with nails, screws, staples, glue or other type of attachment, as this will eliminate the acoustical isolation.

**LEVELROCK Brand
Floor Underlayment**

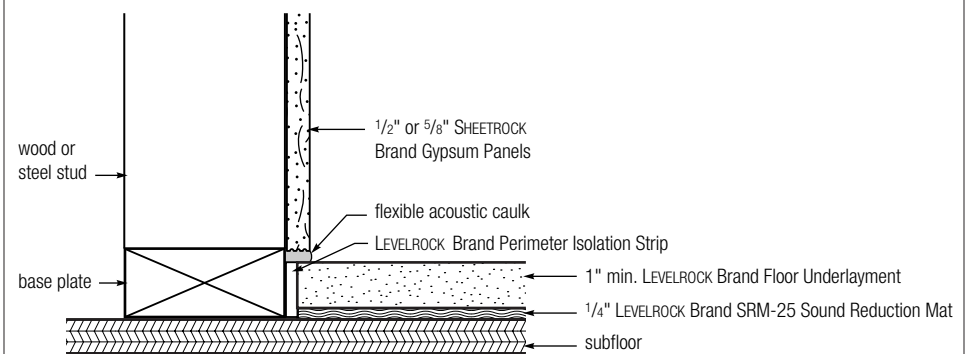
1. Using 2" LEVELROCK Brand Seam Tape, seal the angle between perimeter foam and surface of sound mat to prevent LEVELROCK Brand Floor Underlayment from flowing into spaces on underside of mat, which would adversely affect the acoustical isolation.
2. Seal black fabric face of sound mat with LEVELROCK Brand Floor Primer (Regular, Concentrate or Powdered), following instructions for priming wood floors (see USG literature item IG1505).
3. Install 1" LEVELROCK Brand Floor Underlayment according to USG instructions.

Finish Flooring

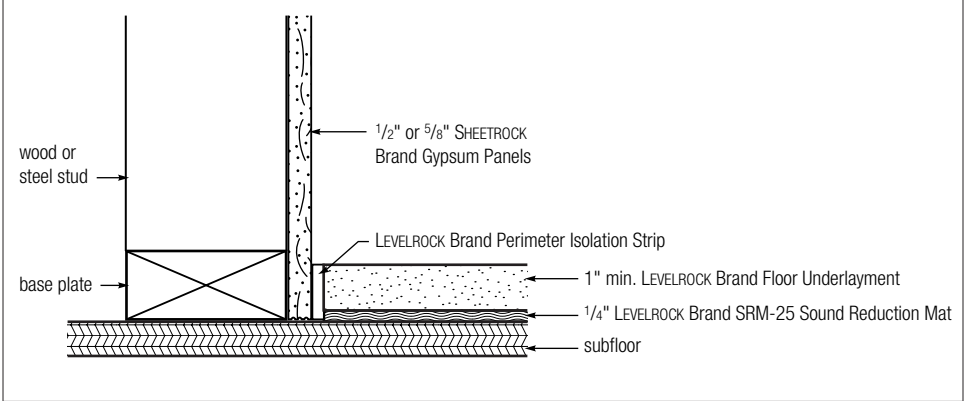
1. Install tile or natural stone according to ANSI A108.5, leaving 1/4" gap between flooring material and wall. Fill gap with acoustical sealant to prevent intrusion of hard materials.
2. Install hardwood with 1/4" gap between flooring material and wall. Fill gap with acoustical sealant to prevent intrusion of hard materials.
3. With vinyl and carpet, no gaps are required between the flooring material and walls. Carpet tack strips should be installed at least 1/4" from edge of poured LEVELROCK Brand Floor Underlayment.
4. Shim baseboards 1/8" above finished floor and fill gap underneath with acoustical sealant.

Assemblies

Installed Before Drywall



Installed After Drywall



UL Designs and Code Approvals

UL Designs

LEVELROCK Brand Floor Underlayments meet the following UL designs: G230, G516, J917, J919, J920, J924, J927, J931, J957, J966, J991, J994, K906, L206, L501, L502, L505, L511, L512, L513, L514, L518, L521, L524, L525, L528, L529, L530, L534, L535, L536, L537, L541, L544, L550, L555, L556, L563

New UL designs may become available; contact your local USG representative for more information.

Model Building Code Approvals

ICC Evaluation Service Report No. ER-5885
 New York City Department of Buildings MEA (Materials and Equipment Acceptance) MEA 236-01-M
 HUD 1314

Submittal Approvals

Job Name		
Contractor		Date

Trademarks

The following trademarks used herein are owned by United States Gypsum Company or a related company: LEVELROCK, SRM-25. NASHUA is a registered trademark of Tyco Adhesives. SHURTAPE is a registered trademark of Shurtape Technologies Inc.

Note

Products described here may not be available in all geographic markets. Consult your U.S. Gypsum Company sales office or representative for more information.

Notice

We shall not be liable for incidental or consequential damages, directly or indirectly sustained, nor for any loss caused by application of these goods not in accordance with current printed instructions or for other than the intended use. Our liability is expressly limited to replacement of defective goods. Any claim shall be deemed waived unless made to us in writing within thirty days from the date it was or reasonably should have been discovered.

SAFETY FIRST!

Follow good safety practices. Read material safety data sheets and related literature on products before specification and/or installation.



Manufactured by
United States Gypsum Company
Industrial Products Division
125 South Franklin Street
Chicago, IL 60606

800 USG.4YOU (874-4968)
800 847.4431
www.levelrock.com
www.gypsumsolutions.com

IG1619/5-04
© 2004, United States Gypsum Company
Printed in U.S.A.